

Annual Report 2008/09 & Business Plan 2009/10



Swindon Local Safeguarding Children Board

Safeguarding Swindon's Children Together



Introduction	3
Foreword by Swindon LSCB Chair	4
Swindon LSCB Vision	6
Swindon LSCB Core Objectives	6
Swindon LSCB Key Objectives by Function	6
Swindon LSCB Guiding Principles	7
Swindon LSCB: Structure Diagram (as at April 2009).....	8
Swindon LSCB: Board Membership (as at April 2009)	9
Review	10
2008-2009 Key Objectives: Headline Achievements	10
Key Facts and Figures April 2008 to March 2009	12
Child Deaths	13
Serious Case Reviews	15
Swindon LSCB Safeguarding Training.....	16
The Swindon Safeguarding Community.....	17
Statistics & Performance Indicators	18
Safeguarding Performance April 2008 to March 2009	18
LSCB Attendance April 2008 to March 2009	24
Financial Review.....	26
Swindon LSCB Income and Expenditure 2008 to 2009	26
Swindon LSCB Budget Requirement 2009 to 2010	27
Objectives 09/10: Swindon LSCB Business Plan	28
Overview	28
Principal Business Plan Objectives.....	29
Background Information.....	30
Swindon LSCB - Wider Structures	30
References	32
National Documents.....	32
Local Documents	32
Contact Details	33

11 million children in England. Of these . . .

- ☐ 200,000 children live in households where there is a known high risk case of domestic abuse and violence
- ☐ 235,000 are 'children in need' and in receipt of support from a local authority
- ☐ 60,000 are looked after by a local authority
- ☐ 37,000 are the subject of a care order
- ☐ 29,000 are the subject of a Child Protection Plan
- ☐ 1,300 are privately fostered
- ☐ 300 are in secure children's homes

The Protection of Children in England: A Progress Report, The Lord Laming



Children are our future. We depend on them growing up to become fulfilled citizens well able to contribute successfully to family life and to the wider society. It is of fundamental importance that the life and future development of each child is given equal importance. Every child needs to be nurtured and protected from harm.

The Protection of Children in England: A Progress Report, The Lord Laming

Foreword by Swindon LSCB Chair

Local Safeguarding Children Boards should report to the Children's Trust Board and publish an annual report on the effectiveness of safeguarding in the local area.

The Protection of Children in England: A Progress Report, The Lord Laming



John Gilbert
Chair, Swindon LSCB
Group Director, Children,
Swindon Borough Council

A key focus for Swindon LSCB over the last year has been to develop the processes by which we know how and if our safeguarding efforts are effective. This work is reflected in our detailed 2009/10 **Work Plan**, which provides clear links to both local and national performance indicators. We are also finalising our risk register to help identify and manage these, as well as maximise any opportunities.

We were able to gain useful feedback from multi-agency practitioners at our Serious Case Review Event, **Improving Safeguarding Practice**. This suggested that the lessons from Serious Case Reviews and the wider work of the LSCB have made a real difference to safeguarding in Swindon. Participants noted new service provision such as U-Turn (the young people's substance misuse service), the AIM project (for children & young people who show sexually harmful behaviour) and Advocacy Services for children and parents in the child protection process. They remarked on practice improvements, referring to a better sense of corporate parenting, increased recognition of the need to see the child on their own, the identification of Lead Professionals, provision of housing for at-risk teens, support for runaways, improvements for 16 -18 year olds, stronger transitions to Adult Mental Health, and shared vocabulary and thresholds. There was recognition of 'a much improved, pro-active LSCB' with strong sub-groups, providing good multi-agency training. Attendees reflected a sense of a more supportive work environment and a more genuinely 'no blame' culture, with real awareness that safeguarding is everyone's business and less 'silo' working.

The positive impact of our emphasis on Safer Recruitment training for all agencies was reflected in our Section 11 Review, which indicated high levels of agency awareness and good practice.

As we move forward, the LSCB has taken responsibility for overseeing and monitoring the *Stay Safe* outcome from Swindon's ***Children and Young People's Plan***. Key projects include embedding AIM into mainstream services, raising awareness around sexual exploitation and runaways, creating an e-safety policy and ensuring that our new ***See the Adult, See the Child*** protocol informs stronger links between children's and adult services. We also hope to begin to see useful information from our Child Death Review process to help us make sure we are working in every way we can to reduce deaths from all causes.

When we say '*safeguarding is everybody's business*', this can have no stronger significance than when considering the role of multi-agencies working in a joined up integrated way. Swindon is driving forward multi-agency co-location at the same time as the very high profile policy of ***Connecting People, Connecting Places*** takes shape, thus we will be seeing a much stronger community presence in the future. We are all working in an ever more complex world where we need to try to rationalise and streamline our processes to ensure we work effectively together.

The terrible events surrounding the death of 'Baby P' have heightened awareness of the importance of safeguarding to a new level. The DCSF has recently responded to The Lord Laming's report that followed these events and we are currently working through their 58 recommendations.

Thank you all for what you are doing to contribute to this crucially important area of work.



John Gilbert

Chair, Swindon LSCB

Group Director, Children, Swindon Borough Council

Swindon LSCB Vision

“Working together to keep children safe in Swindon”

Swindon LSCB Core Objectives

- ☐ To co-ordinate the work of agencies to safeguard children and promote the welfare of children within Swindon
- ☐ To ensure the effectiveness of safeguarding children in Swindon

Swindon LSCB Key Objectives by Function¹

Policies & Procedures Function

- ☐ To develop and agree local multi-agency policies and procedures for safeguarding and promoting the welfare of children in Swindon.
- ☐ To ensure that both single and multi-agency training on safeguarding and promoting welfare is available as needed throughout Swindon and is reaching the relevant staff.

Communication & Awareness Raising Function

- ☐ To raise awareness within Swindon of the need to safeguard and promote the welfare of children, encouraging involvement at all levels within the community.
- ☐ To ensure that agencies share a common understanding of how and when action should be taken to protect a child.
- ☐ To ensure that any lessons learned, either locally or nationally, are shared, understood and acted upon.
- ☐ To help develop good working relationships between different professional groups based on trust and mutual understanding.

Monitoring & Evaluation Function

- ☐ To oversee how well local services work together to protect children.
- ☐ To monitor and evaluate the effectiveness of both collective and individual agency arrangements for safeguarding children and promoting their welfare.

Function of Participating in Planning & Commissioning

- ☐ To participate in the planning of children services in Swindon.
- ☐ To agree what is to be done to safeguard and promote the welfare of children and how this will be measured, within the framework set out in the *Children and Young People's Plan*.

Functions Relating to Child Deaths

- ☐ To collect and analyse information about all child deaths within Swindon (this will be required from 1 April 2008).

¹ LSCB Functions as defined in *Working Together to Safeguard Children, 2006, Chapter 3*

Serious Case Review Function

- ☐ To carry out serious case reviews where a child has died and abuse or neglect has been confirmed or is suspected. In certain circumstances, a serious case review may also take place where a child has been very seriously harmed.

Working Together 2006 also states that:

An LSCB may also engage in any other activity that facilitates, or is conducive to, the achievement of its objectives.

Swindon LSCB Guiding Principles

Swindon LSCB believes that:

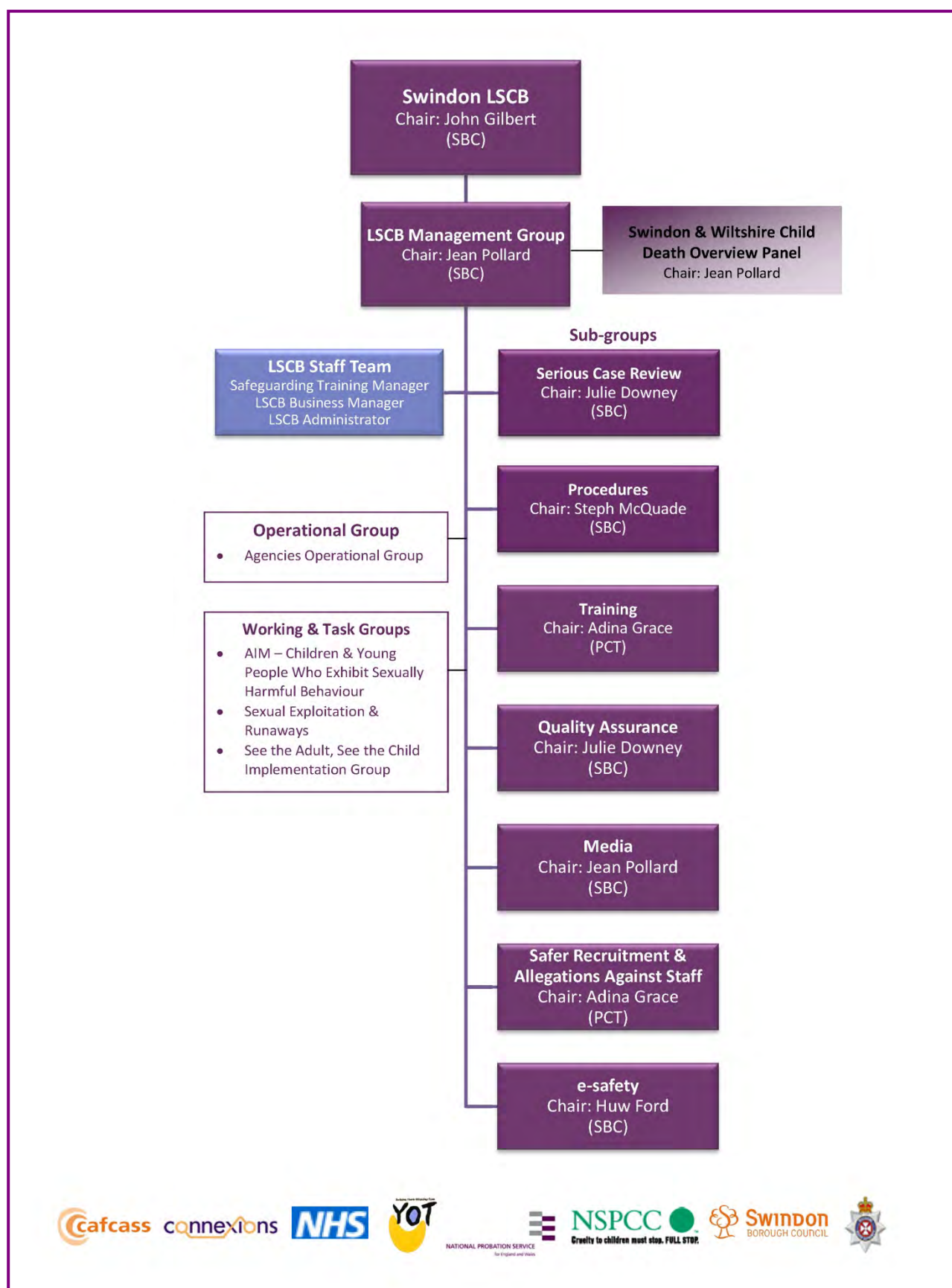
- ☐ the welfare and safety of the child is paramount.
- ☐ we are stronger in protecting children if we all work together. This includes statutory and voluntary agencies and the wider communities.
- ☐ we should support families in bringing up their children safely.
- ☐ we should provide an equitable, quality service to all children and their families.
- ☐ services should be provided which are appropriate to race, religion, culture, language, gender, sexual orientation and disability
- ☐ we need to be accountable for our actions, open to challenge, and to learn from practice in order to achieve continuous improvement.
- ☐ that procedures and processes should be open and transparent.

Swindon LSCB will further ensure that:

- ☐ personal information is held confidentially and only by those who need to know.
- ☐ child protection is viewed in the wider context of children's needs and rights.



Swindon LSCB: Structure Diagram (as at April 2009)



Swindon LSCB: Board Membership (as at April 2009)

Core/Funding Partners

These partners are represented on the Board and at Swindon LSCB Management Group Meetings.

Senior Police Officer, Swindon: Kevin Maidment, Superintendent Operations (Swindon)

CEO Delegated Representative, Swindon PCT: Lynda Wearn, Deputy Director of Public Health

Designated Doctor, Child Protection: Dr Janet King, Consultant Paediatrician

Designated Nurse, Child Protection: Adina Grace, Assistant Director Commissioning for Children Young People & Family Services

Designated Doctor, Child Deaths: Dr Paul O'Keefe, Consultant Paediatrician

Great Western Hospital Foundation Trust Representative: Sue Rowley, Director of Nursing, Executive Lead for Children's Services

Group Director, Children, Swindon Borough Council: John Gilbert (CHAIR)

Director of Safeguarding and Corporate Parenting, Swindon Borough Council: Jean Pollard

Head of Safeguarding, Swindon Borough Council: Julie Downey

Educational Support Services, Swindon Borough Council Representative: Pam Jackson, SEN & Inclusion and Schools Safeguarding Advisor

Multi Agency Teams & Connexions Representative: Sara Tough, Director, Integrated Children & Young People's Services, Swindon Borough Council

Area Service Manager, CAFCASS: Claire McConnel

Area Service Manager, NSPCC: Jeannette Chipping

Probation Service Representative: Mal Munday, Assistant Chief Officer, Business Development and Partnerships (VICE-CHAIR)

Other Partners

These partners are represented on the Board.

Head of Youth Offending Team (YOT): Kevin Leaning

Housing, Libraries and Leisure Representative: Mike Ash, Head of Service - Housing Strategy

Adult Services Representative: Doug Bale

Avon & Wiltshire Mental Health Partnership NHS Trust Representative: Mark Dean, Head of Safeguarding, Integrated Governance & Nursing Directorate

Great Western Ambulance Service NHS Trust Representative: David Wilmot, Clinical Effectiveness Manager (Standards)

Strategic Health Authority Representative: Mandy Cox, NSF Lead

Fire Service Representative: John Popowicz, Borough Commander

Immigration Service Representative: tbc

Professional Representatives

These representatives provide insights from and communication with their professional bodies.

Early Years Representative: Pauline Webster

Primary School Headteachers: Paul Kohn

Secondary School Headteachers: tbc

College Representative: Duncan Webster

Special Schools Representative: Kathie Bryan

GP Representative: Liz Mearns

Pharmacy Representative: Toni Lloyd

Dental Practitioners' Representative: Robin Mills

Opticians' Representative: tbc

Voluntary Sector Representative: Stephanie Hathaway

Community Safety Partnership Representative: Chris Sivers

DV Co-ordinator: Lin Williams

The chair of any LSCB sub-group not included above, who will also attend Management Group:

Procedures Sub-group: Stephanie McQuade

E-safety Sub Group Chair: Huw Ford

You will find details of membership of the LSCB Management Group and all LSCB Sub-groups on the Swindon LSCB Website, www.swindonlscb.org.uk in the **About Us** section.

2008-2009 Key Objectives: Headline Achievements

- ❑ **Swindon LSCB:** to work together to safeguard Swindon's children, delivering a quality service as defined in our *Core and Key Objectives* (see page 6). Priorities in 2008/9 will include establishing effective structures and processes around **Child Death Reviews** and the new **Children's Rights service** and improving the method by which commitment to **LSCB funding** is secured.

- Contributing to the new **Children's Rights Service** to providing advocacy for children in the child protection process
- With Wiltshire LSCB, setting up a shared process and joint **Child Death Overview Panel**, which has reviewed nine cases in its first year
- Also with Wiltshire LSCB, further improving our shared process for auditing partner agency arrangements to safeguard and promote the welfare of children under **Section 11** of the Children Act 2004 following our effective first joint review in 2008
- Continuing promotion of the **South West Child Protection Procedures** and **local guidance** through an e-mail survey, a 'Bus' Partnership Event and our regular e-mail updates
- Through the QA Sub-group, undertaking a **thematic audit programme** of child protection cases and referrals, including focussed work around de-registrations and re-registrations, assessing the quality of information, recommending practice improvements and affirming existing good practice
- Updating and improving the **Swindon Serious Case Review Process Guide** in line with recent guidance
- Organising two successful and well-attended conferences, '**Risky Behaviours**' in April 2008, highlighting a number of current 'hot topics', including trafficking, runaways, online exploitation and e-safety and '**Improving Safeguarding Practice**' in February 2009 aimed at sharing the learning from Serious Case Reviews
- Using the new **LSCB Challenge & Improvement Tool** to develop an action plan to improve Swindon LSCB's governance
- With the NSPCC, launching their **Safer Communities Toolkit** to 21 participants from local community organisations

- ❑ **Sexually Harmful Behaviour (AIM):** following evaluation of the pilot project, to complete the implementation of a multi-agency strategy for intervention with children and young people who show sexually harmful behaviour.

- Evaluating our **AIM pilot**, with report to LSCB in June 2008
- Appointing an **AIM Project Co-ordinator** for 1 day a week from January 2009

- ❑ **Child Exploitation:** to gain an understanding of existing information sources and strategies and of the current levels of exploitation.

- Re-assessing the need in the light of new guidance and performance indicators
- Developing separate but linked **action plans for Sexual Exploitation and Runaways**
- Setting up a new LSCB **Sexual Exploitation and Runaways Group** to take this work forward

- ❑ **Safeguarding Children Online:** to achieve clarity as to existing local initiatives, identify the LSCB's ongoing role and develop an e-safety strategy.

- *Setting up an **e-safety Sub-group** to help us to ensure that we are developing work in this area in line with BECTA guidance – Swindon was one of the earliest LSCB's to do this*
- ***Raising awareness of e-safety issues** through sessions at our 'Risky Behaviours' Conference*

- ❑ **Safer Recruitment:** to widen the delivery of Safer Recruitment training with the aim that by April 2009 at least one member of all interview panels in organisations recruiting staff to work with children has received this or equivalent training.

- *Training 223 multi-agency staff in Safer Recruitment, through **monthly courses** attended by a wide range of professionals, following on from our successful work with schools in the previous year*

- ❑ **See the Adult, See the Child²:** to sign off and launch the newly revised *See the Adult, See the Child* protocol, establishing recommendations as to actions needed to take this work forward for inclusion in our next Business Plan.

- *Completing an updated **See the Adult, See the Child protocol** which now includes parental mental health issues, substance misuse issues, disability, learning difficulty or criminal activity and imprisonment*
- *Launching the protocol at a well attended **multi-agency partnership event***
- *Setting up a multi-agency **working group** drawn from Children and Adult Services to take forward work to embed the protocol into practice*

- ❑ **Monitoring & Scrutiny:** to fulfil our responsibilities for monitoring work relevant to safeguarding in Swindon, in particular as this relates to *Allegations Against Staff, Disabled Children, Children Looked After, Underage Sex, Young People & Alcohol* and the Sexual Assault Referral Centre (SARC).

- *Developing an effective **allegations reporting process** based on our quarterly data submission to GOSW*
- *Identifying and responding to potential problems with the reporting system for child protection issues relating to **underage sex** to create a more robust process*
- *Carrying out a review of the ten most vulnerable **disabled children** in need cases*

² *See the Adult, See the Child (STASTC)* – services for children and families affected by parental needs

Key Facts and Figures April 2008 to March 2009

- ❑ **32** child protection cases and **3** referrals to Children Services were audited by the QA Sub-group.
- ❑ **139** children became the subject of a Child Protection Plan in Swindon.
- ❑ **260** Section 47 enquiries and **144** initial child protection conferences were held.
- ❑ **229** enquiries were made to the list of children subject to a child protection plan.
- ❑ **60** families received advocacy for one or more children over the age of ten within the child protection process.
- ❑ **1362** multi-agency staff were trained by Swindon LSCB through **56** courses and events on a wide range of safeguarding issues, nearly 40% more than last year.
- ❑ **10** of these were trained to deliver child protection training within their own agency and/or for the LSCB through the **Training the Trainers** course.
- ❑ **3 LSCB E-zines** and updates were circulated widely within the local professional and voluntary sector community to keep people informed about safeguarding locally.
- ❑ **133** multi-agency professionals from a wide range of Swindon organisations attended **Swindon LSCB's Annual Conference, 'Risky Behaviours'** that included sessions on **Trafficking, Online Exploitation, E-safety, Runaways, Drugs, Sex and Alcohol** and a performance by Swindon College's SHOUT Productions illustrating **young people's views** and concerns
- ❑ **150+** people attended our **Improving Safeguarding Practice** conference aimed at sharing the learning from Serious Case Reviews and exploring effective ways to ensure that this learning makes a difference for families and children in Swindon
- ❑ **100+** multi-agency staff from both Adult and Children Services took part in our **partnership event** to launch *See the Adult, See the Child*
- ❑ **15,000+ Pocket Workers' Guides** to child protection have now been disseminated through the statutory and voluntary sector in Swindon
- ❑ **14** copies of the Swindon *Serious Case Review Process* have been sold to other LSCBs
- ❑ **45** multi-agency professionals were trained to carry out initial AIM³ assessments with young people aged 12 and over
- ❑ **12** new referrals were made through the AIM project (6 last year)
- ❑ **87** new allegations against staff were received and investigated (39 last year)
- ❑ **144** strategy meetings relating to allegations were held (95 last year)

³ Assessment, Intervention and Moving-on Project for children and young people who exhibit sexually harmful behaviour

Child Deaths

From April 1 2008, all LSCBs had to have in place a **rapid response process** to child deaths and a **Child Death Review Panel**.

The LSCB is responsible for collecting and analysing information about the deaths of children and young people (up to the age of 18) in their area. From this information, it should be possible to identify patterns and trends and take specific action to prevent some similar deaths in future.

Swindon and Wiltshire LSCBs decided to work together on child deaths. This will ensure that data is based on a meaningful sample size and that local agencies are able to respond more effectively to child deaths.

The aims of the child death review process are

- ☐ to learn from all child deaths, enabling changes which may prevent future deaths.
- ☐ to identify whether deaths are preventable and work to reduce the numbers of preventable deaths over time.
- ☐ to improve the way in which each death is responded to ensuring a process that provides good information and support to families at all stages.
- ☐ in the rare cases where homicide has occurred, to collect information in a way that prevents unsafe convictions but supports convictions where appropriate.
- ☐ to ensure that families are offered bereavement services.

26% of cases, where a judgement could be made, contained avoidable factors. . . In a further 43% of cases there were potentially avoidable factors.

Why Children Die: A Pilot Study 2006, CEMACH

Rapid Response Team

The Rapid Response Team is responsible for:

- ☐ making immediate enquiries into unexpected deaths, including home visits.
- ☐ collecting information about these deaths in line with a nationally agreed dataset.
- ☐ maintaining contact with the family to keep them up to date with information about the death and ensure good support.

Child Death Overview Panel

The Child Death Overview Panel meets regularly to review anonymised data on all child deaths in Wiltshire and Swindon, also carrying out more detailed specific or thematic reviews. They look at:

- ☐ the factors (health, environmental, social and cultural) that led to the death of the child and any service involvement prior to that death.
- ☐ Groups of deaths to identify any emerging patterns or trends which indicate preventative factors that might impact on future deaths

The Panel will refer to the LSCB Chair any deaths where they feel there may be grounds for a Serious Case Review and explore why this has not previously been recognised.

Review of Child Deaths in Swindon and Wiltshire 2008/9

Swindon and Wiltshire LSCBs worked together during 2008/9 to set up their joint Child Death Review process. A joint Child Death sub-committee met throughout the year to develop the Rapid Response process, the Child Death Overview Panel, and the training programme.

The Police Rapid Response team went live in the summer 2008 with a specially trained team of Police Officers on call to attend any unexpected deaths. Our Health Visitor Team was established by September to work in parallel with their police colleagues and paediatricians.

In September 2008 the first meeting of the Child Death Overview Panel took place. This was planned as both a training event and a live Panel event. However the first Swindon or Wiltshire cases for the year were not yet available and in the event the Panel used case samples from the pilot authorities for their training.

The Child Death Overview Panel has met twice since and has considered nine deaths in detail, particularly focusing on groups of neonatal deaths and deaths from terminal illnesses.

You will find further information on Child Death Reviews on the Swindon LSCB Website, www.swindonlscb.org.uk.

Serious Case Reviews

During 2008 to 2009, we have continued to develop services and good practice based on actions from reviews completed in previous years. At our **Improving Safeguarding Practice** conference in February 2009 we reflected on the learning from both local and national Serious Case Reviews, as well as considering the impact of this learning on practice.

We have also initiated a new Serious Case Review following an assault on a teenager on school premises at the end of the school day. The purpose of this review is to identify any lessons from this incident that may inform practice to protect young people from the effects of bullying, gangs and racial tensions.

Outcomes from Recent Swindon Serious Case Reviews:

The last Serious Case Reviews were completed in 2006. Progress on LSCB and agency action plans has been kept under careful and regular review by the LSCB and there is clear evidence of progress and change in the ways agencies work together to safeguard children in Swindon.

Among the outcomes from recent Serious Case Reviews are:

- ☐ The development of **a local substance misuse service (U Turn)** supported by multi-agency practice guidance.
- ☐ Better links between hospital staff, U Turn and the 16+ team, backed up by a **substance misuse pathway**.
- ☐ A new **Escalation Policy** and training that enable staff to challenge other professionals more readily.
- ☐ A much developed **LSCB multi-agency training programme** incorporating the learning from SCR's both into our core programme and topic based courses.
- ☐ Heightened awareness throughout the local safeguarding community of the **issues of neglect**.
- ☐ A new **Unborn Baby Protocol** to help professionals identify risks and support for both families and professionals when considering unborn babies.
- ☐ **No Access Guidance** to assist staff on what to do when having trouble seeing a child due to non attendance for appointments or lack of access for home visits.
- ☐ An updated **See the Adult, See the Child** protocol. Through the implementation of this protocol, the LSCB is looking to develop stronger links between the work of adult and children's services in Swindon.
- ☐ An **LSCB Sexual Exploitation and Runaways working group** is developing a multi-agency strategy to address the needs of this vulnerable group.
- ☐ A **transition process** in place for children/young people with chronic/dependent conditions moving to adult services.

The LSCB constantly reviews its **SCR process** to ensure that it is robust and that there are opportunities to disseminate learning to staff.

You will find further information on Serious Case Reviews (including [Executive Summaries from Serious Case Reviews](#) undertaken by Swindon LSCB) on the Swindon LSCB Website, www.swindonlscb.org.uk.

Swindon LSCB Safeguarding Training

Child Death Review Training

2 courses were run during this period to support the process as outlined in Chapter 7 of *Working Together to Safeguard Children 2006*. The first was to raise awareness for Managers and the second for professionals who will be part of the Rapid Response Teams.

AIM (Sexually Harmful Behaviour) Training

To support the pilot of the **A**ssessment **I**ntervention and **M**oving-on project 3 further courses were run.

Launch of the NSPCC *Safer Communities Toolkit*

In June 2008 Swindon LSCB collaborated with the NSPCC to launch their *Safer Communities Toolkit* to 19 participants from community organisations within Swindon.

Foundation Training

A record number of 179 participants from various statutory and non-statutory organisations attended 7 courses. As a result of feedback, the course has now been extended to 4 hours to allow for extra learning.

Safer Recruitment Training

A further 223 participants have been trained making a total of 384 over the last two years. Safer Recruitment is an essential strand of safeguarding and promoting the welfare of children and young people.

Events

3 LSCB events were delivered during the year, our annual conference on *Risky Behaviours*, a Serious Case Review event entitled *Improving Safeguarding Practice* and an event to launch the '*See the Adult, See the Child*' Protocol.

General

A record number of **1362** staff across agencies received training and attended LSCB events. This is an increase of **38%** over the previous period. It could not have been achieved without the tireless work of the LSCB Administrator and the support from staff from various agencies giving up their time in supporting the LSCB Training Manager in delivering the training programme.

You will find full details of the [Swindon LSCB Training Programme](http://www.swindonlscb.org.uk) on our website, www.swindonlscb.org.uk.

The Swindon Safeguarding Community

Although the key agencies that work with children in Swindon are represented on Swindon LSCB, it is vitally important that the influence of the Board and a real awareness of safeguarding issues penetrate outwards into the local community.

During the last year, we developed and maintained links into the following bodies:

- The Anti-bullying Group
- The Children's Rights Service
- The Children's Trust
- The Children & Young People's Partnership Board
- The Community Safety Partnership
- The Domestic Homicide Review Panel
- The Domestic Violence Review Panel
- The Domestic Violence Steering Group
- The Family Courts
- The Licensing Forum
- The Local Area Agreement (LAA)
- The Local Safeguarding Adults Board
- The Looked After Children Advisory Board
- MAPPA (Multi-agency Public Protection Arrangements)
- MARAC (Multi-agency Risk Assessment Conferences)
- The South West Grid for Learning (SWGfL)
- The Sexual Assault Referral Centre (SARC)
- The Teenage Pregnancy Board

In June 2008 Swindon LSCB collaborated with the NSPCC to launch their **Safer Communities Toolkit** to 19 community organisations within Swindon. We have also run 2 courses on **Safeguarding Children in Faith Communities** (24 attendees).

We continue to promote the LSCB and safeguarding through events and our website and circulate our quarterly newsletter widely by e-mail within the statutory and voluntary sectors. Attendees at safeguarding training and events from organisations who are not members of the LSCB have included participants from:

- ❖ *Bahai's Project* ❖ *Barnardo's* ❖ *Bee Hive Club* ❖ *Bright Stars Afterschool Club* ❖
- ❖ *Bromford Group* ❖ *Bromford Support* ❖ *Busy Fingers Community Group* ❖
- ❖ *Care Company* ❖ *Citifaith Church* ❖ *Clivey Project* ❖ *Defence College, Shrivenham* ❖
- ❖ *Drama Babes* ❖ *Families First SW Ltd* ❖ *Five Rivers Fostering* ❖ *Fostering Solutions* ❖
- ❖ *Happen FosterCare Ltd* ❖ *Haydon Meadow Pre-school* ❖ *Highworth Preschool* ❖
- ❖ *Hindu Samaj – Swindon* ❖ *Holy Rood Playgroup* ❖ *Holy Trinity Acorns Preschool* ❖
- ❖ *Homestart* ❖ *Independent Living Centre* ❖ *Key Time* ❖ *Moredon Children's Centre* ❖
- ❖ *NG kids* ❖ *Pertemps* ❖ *Prospect Hospice* ❖ *Rainbow Trust* ❖
- ❖ *Robert Le Kyng Children's Centre* ❖ *Salt Way Children's Centre* ❖
- ❖ *Sanctuary Home Care* ❖ *Sanctuary Housing* ❖ *SMASH* ❖ *Stratton Community Centre* ❖
- ❖ *Stratton Leisure Centre* ❖ *Stepping Forward* ❖ *Shout Productions* ❖ *Surestart* ❖
- ❖ *SW Grid for Learning* ❖ *Swindon 10-18 Project* ❖ *Swindon Academy* ❖
- ❖ *Swindon Advocacy Movement* ❖ *Swindon Carers* ❖ *Swindon Carers Centre* ❖
- ❖ *Swindon Foyer* ❖ *Swindon Independent Visitors* ❖ *Swindon Therapy Centre for MS* ❖
- ❖ *Swindon Town Football Club* ❖ *Swindon Volunteer Centre* ❖ *Swindon Young Carers* ❖
- ❖ *Well Child Children's Charity* ❖ *Westlea Afterschool Club* ❖

Leisure services, libraries and the **fire service** are all now represented on the LSCB and staff from these services have also attended training and events.

Safeguarding Performance April 2008 to March 2009

Child Protection Assessments & Investigations

PI		2007/8			2008/9	Top PAF Band/ 'Good' Performance	RAG Status
		England	Statistical Neighbours	Swindon	Swindon		
	Assessments & Investigations						
	Total number of referrals completed			1692	1799		Green
	Referrals per 10,000 population aged under 18	493	429	400	425	Target for 2008/9: 420	Green
Stay Safe NI 68	Referrals to children's social care going on to initial assessment	59.4%	56.1%	53.7%	56.6%	Target for 2008/9: 52%	Green
	Initial assessments				1019		Green
	% of initial assessments completed within 7 working days	68.4%	70.2%	62.7%	71.5%	Target for 2008/9: 72%	Green
	Core assessments			282	225		Red
	Core assessments per 10,000 population aged under 18	95.6	86.8	66.6	53.2	Target for 2008/9: 65	Red
Stay Safe NI 60	% of core assessments carried out within 35 working days of their commencement	80.0%	78.0%	91.0%	93.3%	80 - 100% Target for 2008/9: 80%	Green
	Initial child protection conferences			131	144		
	Initial child protection conferences per 10,000 population aged under 18	36.7	29.8	31.4	34	Target for 2008/9: 35	
Stay Safe NI 59 & PSA 13	% of children referred to children's social care who received an initial assessment within 7 working days	70.7%	70.2%	62.7%	71.5%		
	S47 Investigations			310	260		
Stay Safe NI 67	Child protection cases reviewed within required timescales	99.0%		100.0%	97.9%	Target for 2008/9: 100%	Amber

Commentary:

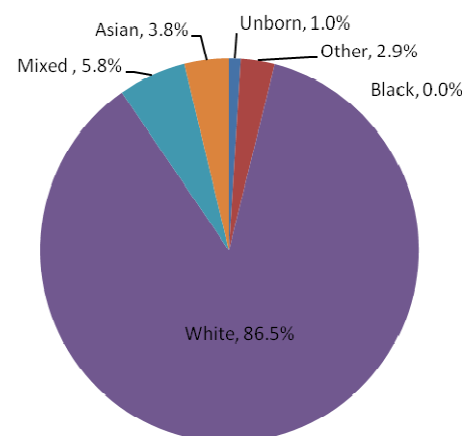
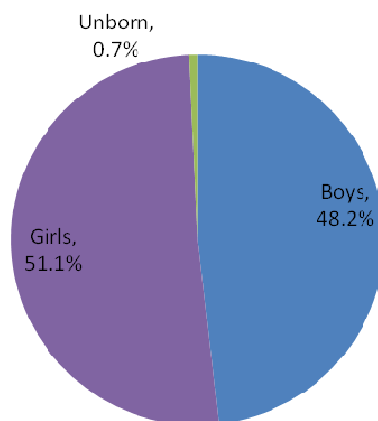
- The re-referral rate was 16.4% for 2008/9. This is significantly below the statistical neighbour average of 25.6%. Good performance is low, although inspectors may query our rate as we are becoming a potential outlier for this indicator.
- The actual number of core assessments completed during the year has decreased from 282 in 2007/8 to 225 in 2008/9. This equates to 53.2 per 10,000 population and is significantly below the statistical neighbour average of 86.8 per 10,000 population. The data relating to this indicator is being investigated by operational managers to ensure that all core assessments have been captured.
- The review for one family of 4 children was delayed in the family's best interest. Swindon has previously sustained 100% performance for 4 consecutive years.
- The percentage of referrals leading to initial assessments is reported as 56.6% for 2008/9, exceeding our LAA2 target for the year of 52%. The statistical neighbour average for 07/08 was 51.1%.
- Overall, 1019 initial assessments were completed during 2008/9, an increase on 2007/8.

Children Subject to a Child Protection Plan

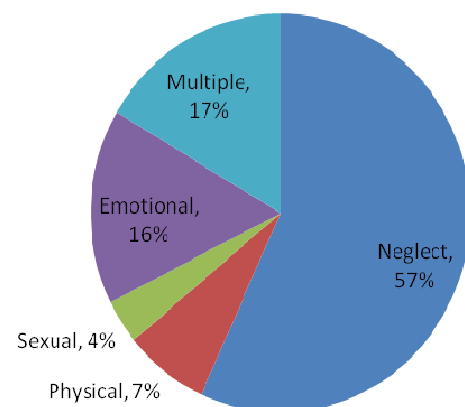
PI		2007/8			2008/9	Top PAF Band/ 'Good' Performance	RAG Status
		England	Statistical Neighbours	Swindon	Swindon		
	Child Protection Plans						
	Number of children who were the subject of a Child Protection Plan at 31/3/09			92	104		Green
	Rate per 10,000 population aged under 18 (31/3/09)	26.5	22.6	21.7	24.6	Target for 2008/9: 24	Green
	Total registration rate per 10,000 population aged under 18	30.9	25.6	25.8	32.9	Target for 2008/9: 30	
	Children who became the subject of a plan during 2008/9			109	139		
	Children who became the subject of a plan for a second or subsequent time	13.6%	15.6%	11.9%	15.8%	10 < 15%	Amber
Stay Safe NI 64	Child Protection Plans lasting 2 years or more	5.3%	6.3%	0.0%	0.8%	0-10%	Amber
	Number of Plans ceasing during the year per 10,000 population aged under 18	29.7	25.6	25.3	30.0	Target for 2008/9: 28.8	

Commentary:

- The number of children with a current child protection plan has increased from 92 as at 31.03.08 to 104 at 31.03.09. This equates to 24.6 per 10,000 population under 18 and is higher than our statistical neighbour average for 2007/8 which was 22.6 per 10,000 population aged under 18. However, there is an expectation that there will be an overall national increase in the number of children with a current child protection plan following Lord Laming's recommendations in response to the tragic death of baby P.
- Swindon LSCB undertook an audit of re and de-registration which identified cases where de-registration is occurring prematurely and corrective actions have been taken. (Small numbers can cause fluctuations in performance here and one large family being re-registered can have a large statistical impact.)
- The national figure for child protection plans lasting 2 years or more is 5.3% with our statistical neighbours 6.3%. Swindon is significantly lower with 0.0% in 2007/8 and 0.8% in 2008/9. This links back to the audit undertaken on children made subject to a child protection plan for a second or subsequent time where it was identified that in a number of cases de-registration had occurred prematurely. Corrective actions have been identified to address this.

Gender and Ethnicity:**Category of Abuse:**

	2007/8		2008/9
	England	Swindon	Swindon
Category of Abuse:			
Neglect	45%	44%	57%
Emotional	25%	28%	16%
Physical	15%	13%	7%
Sexual	7%	2%	4%
Multiple	8%	13%	17%

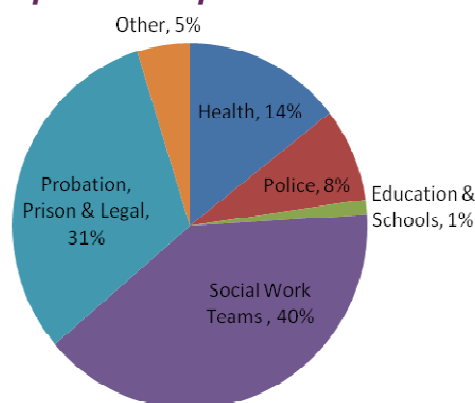


Commentary:

- Following last year's trend, neglect accounted for the largest number of cases in Swindon (57%). In 2007/8 neglect remained the most frequent reason for registration nationally (45%).
- Again following the national trend, sexual abuse accounted for the fewest number of registrations in Swindon, slightly up from last year at 4%.
- Further investigations are being made into our use of multiple categories for children becoming subject to a plan. At 17% (2008/9), these continue to account for a significantly higher percentage of cases than the national average of 8% (2007/8).

Enquiries to the list of children subject to a child protection plan:

- There were 229 enquiries during 2008/9 (512 in 2007/8).
- Investigations have been undertaken to identify reasons for the decrease in enquiries. Initial indications suggest that it is due to a change in administrative processes in some agencies which are being addressed.



Participation in Child Protection Conferences:

Good support is provided for parents/carers in the safeguarding process and information is distributed through websites and parenting programmes

- Swindon has again achieved a high level of parental participation in child protection conferences, with parents attending in over 79% of cases (81% last year).
- 73% of conferences involving children over the age of 10 were attended by one or more children and / or a children's advocate.
- 37% of all conferences were attended by one or more children and / or a children's advocate, (also 37% last year).
- 61% of families where one or more child was over the age of 10 took up the offer of a children's advocate. This has dropped from 74% last year, possibly reflecting some transitional issues when the service provider changed with the introduction of a wider Children's Rights service, provided by VOICE.

I wish to commend all the professionals who have been involved in the conference meetings and the looked after children meetings SAM has attended. Given the difficulty circumstances they have to work under to safeguard children, they have continuously sought parents' views and have encouraged the parents to voice their views and come up with solutions to their own problems which are incorporated in the child protection plans.

Raudha Gharama, Swindon Advocacy Movement

Children Looked After

PI		2007/8			2008/9	Top PAF Band/ 'Good' Performance	RAG Status
		England	Statistical Neighbours	Swindon	Swindon		
	Children Looked After:						
	% Children subject of a plan who were 'children looked after'	8.0%		12.0%	13.5%		
Stay Safe NI 61	% of looked after children adopted during the year who were placed for adoption within 12 months of the agency deciding they should be	76.0%	70.0%	74.0%	85.7%	High figure indicates good performance	
Stay Safe NI 62	% of looked after children at 31 March with 3 or more placements during the year	11.0%	11.0%	10.0%	8.7%	0 < 16.01%	
Stay Safe NI 63	% of children aged under 16 at 31 March who had been looked after continuously for at least 2.5 years, who had lived in the same placement for at least two years, or were placed for adoption	66.5%	64.8%	60.5%	69.1%		
Stay Safe NI 66	% of looked after children cases reviewed during the year that were reviewed on time	80.0%	88.0%	81.0%	94.2%	95 - 100%	
LAC 10/ Promise 29b	Looked after children per 10,000 population aged under 18	54.1	43.3	52.2	54.4	Target for March 2009: 52.8	
LAC 10/ Promise 29b	Number of looked after children in commissioned placements (March)			53	55	Target for March 2009: 44	

Commentary:

- Statistics for Children in Care continue to be very positive. A very high percentage of children (85.7% in 2008/9) are being placed for adoption within 12 months of the agency deciding they should be. This is higher than both the national average (76.0%) and our statistical neighbours (70.0%).
- Year on year, there are improvements with regard to placement stability and reviews being held on time.
- The numbers of children in care remain high but this can increasingly be seen as good practice in keeping children safe.

Bullying

- In the 2008 Tellus Survey, 29% of Swindon Children reported having been bullied at school (25% nationally).
- 15% had experienced bullying elsewhere (13% nationally).

People who enter the children's workforce, be it in the health services, the police, education, youth work or social work, do so to make a difference to other people's lives. Every day, thousands of children are helped, supported and in some cases have their lives saved by these staff.

The Protection of Children in England: A Progress Report, The Lord Laming

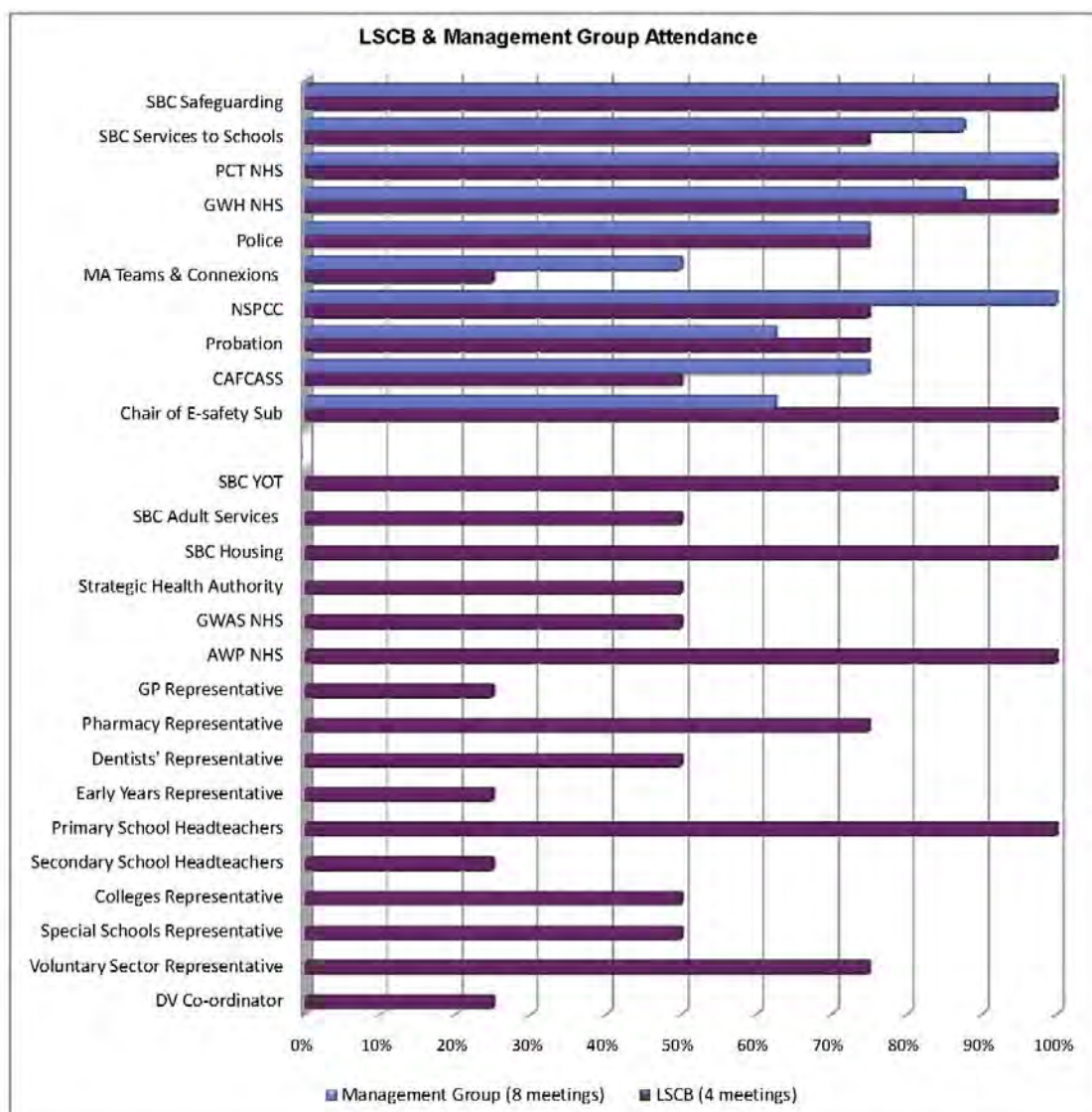
National Statistics taken from ***Referrals, Assessments, and Children and Young People Who Are the Subject of A Child Protection Plan, England - Year ending 31 March 2008*** (DCSF)
www.dcsf.gov.uk/rsgateway/DB/SFR/s000811/index.shtml

Information on Statistical Neighbours taken from ***Children's Services Statistical Neighbour Benchmarking Tool***
www.dcsf.gov.uk/rsgateway/DB/STA/t000712/index.shtml

LSCB Attendance April 2008 to March 2009

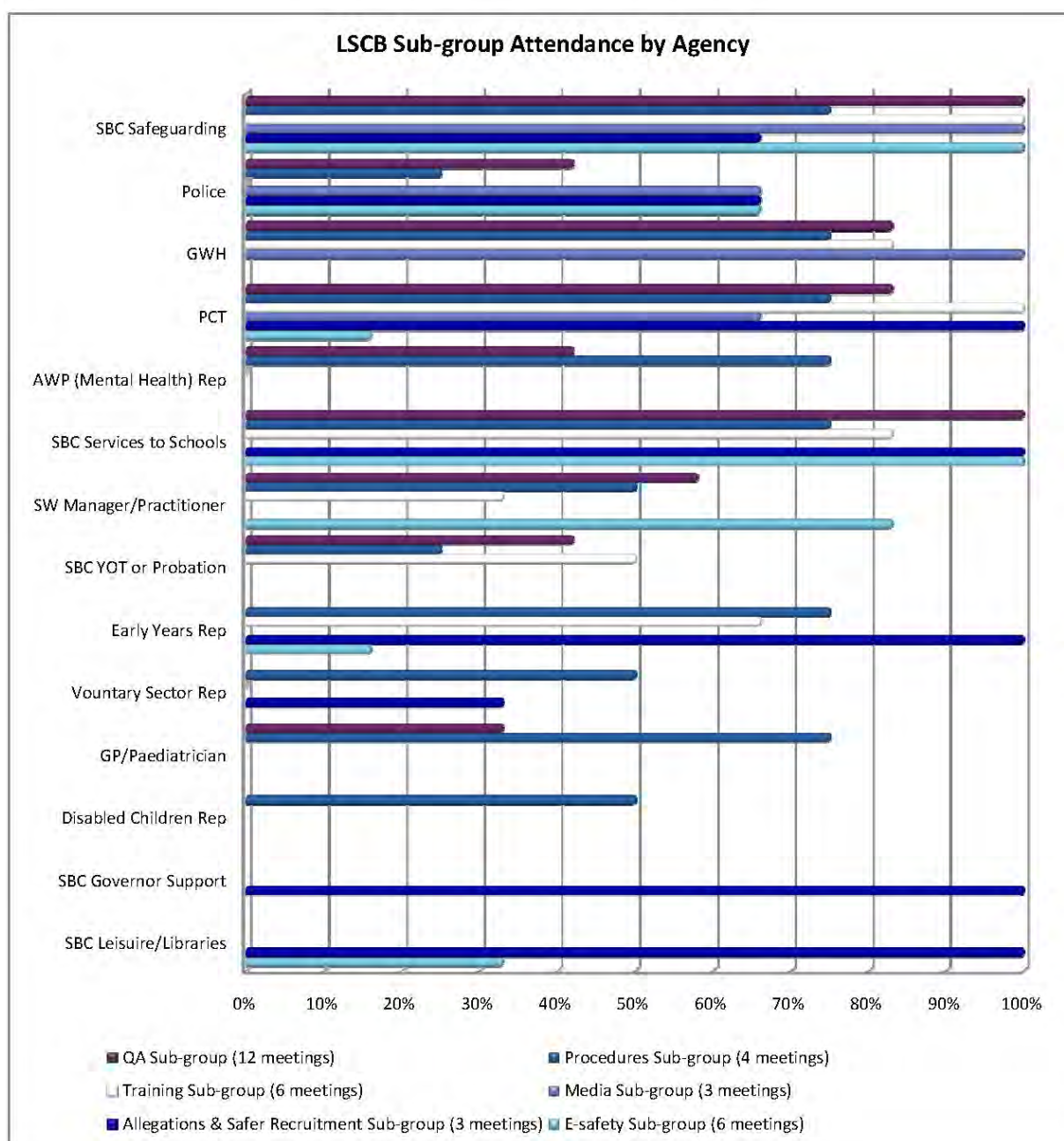
Swindon LSCB agreed in September 2007 that our aim should be 100% agency attendance at the quarterly Board meetings and that all agency leads should nominate a single designated substitute to cover any absences. It was, however, acknowledged that this may not be possible for all professional representatives.

There is also the expectation that the members of the Management Group and Sub-groups will attend regularly, contributing to the work of Swindon LSCB in a consistent manner.



Notes:

- ☐ Some agencies have more than one Board member. The figures above reflect the attendance of one or more members at each meeting.
- ☐ The Strategic Health Authority covers a large number of LSCBs and is not able to attend all meetings. When they are unable to attend, it is on the understanding that the PCT representative feeds back to them.
- ☐ Great Western Ambulance Service NHS Trust also covers a number of LSCBs. When they are unable to attend, the Avon & Wiltshire Mental Health Partnership NHS Trust representative provides a link back to them.



Notes:

The membership for each sub-group is drawn from but does not necessarily contain all of a list of potential members as laid down in our constitution. In some cases, there will be more than one member from an agency representing different strands of the work.

For the Media Sub-group, there is an expectation that both a senior manager and a communications officer attend from each of the core LSCB agencies. For the Allegations Sub-group, there is an expectation of involvement from the HR departments of core agencies. Similarly, Swindon Borough Council Learning and Development and Multi-agency trainers contribute to the Training Sub-group.

Swindon LSCB Income and Expenditure 2008 to 2009

Income		
	2007/8	2008/9
Local Authority	£92,750	£108,650
Health	£40,250	£47,150
Police	£13,325	£13,325
Connexions	£5,000	£12,000
Probation	£5,000	£5,000
LSC	£10,000	£0
CAFCASS		£500
Total Contributions	£166,325	£186,625
Training Income	£2,176	£2,000
Other Income	£75	£850
B/F	£12,683	£44,951
Total	£181,259	£234,426

Expenditure		
	2007/8	2008/9
Employment Costs		
LSCB Posts ⁽¹⁾	£80,281	£95,397
CP Minuting ⁽²⁾	£20,000	£20,000
Multi-agency Training		
Programme	£8,801	£28,581
Delivery of Statutory Agenda		
Policies & Procedures ⁽³⁾	£580	£1,241
Serious Case Reviews	£0	£0
Business Support		
Administration ⁽⁴⁾	£5,898	£4,938
Staff & Member Dev.	£2,047	£1,850
LSCB Projects		
Advocacy ⁽⁵⁾	£15,935	£36,013
Parenting Handbook	£2,467	£6,553
AIM ⁽⁶⁾	£0	£1,873
Total Expenditure	£136,008	£196,446
Creditor Provision	£300	£0
C/F	£44,951	£37,980
Total	£181,259	£234,426

Notes

1. Safeguarding Training Manager (F/T), Business Manager and Administrator (30 hrs pw)
2. Provides an additional 32 hours (split between two P/T posts) of minuting capacity for Child Protection Conferences (total current capacity should be 93 hours, remainder funded by Social Services). This has not been maintained and we are negotiating with Capita.
3. Covers Swindon's contribution to the update and maintenance of the Procedures.
4. Includes printing of Annual Report & Business Plan, graphics (logo and covers), hospitality, room hire, software, equipment, major stationary items, furniture & travel/mileage.
5. To provide an advocacy service for children and parents within the Child Protection Process as part of a wider Children's Rights service.
6. Aim Project (Children Who Display Sexually Harmful Behaviour) – includes co-ordinator since January 2009 (1 day per week)

Swindon LSCB Budget Requirement 2009 to 2010

Indicative Contributions		Budget Requirements	
Local Authority	£123,666	Employment Costs	
Health	£48,329	LSCB Posts ⁽²⁾	£97,200
Police	£13,658	Allegations Against Staff ⁽³⁾	£7,685
Probation	£5,000	Child Protection Minuting ⁽⁴⁾	£20,000
CAFCASS	£500	Independent LSCB Chair ⁽⁵⁾	£10,000
Total Normal Contributions	£191,153	Multi-agency Training	
<i>Local Authority</i>	<i>£25,000</i>	Programme	£24,000
<i>Probation</i>	<i>£1,500</i>	Delivery of Statutory Agenda	
Extra Contributions Re SCR	£26,500	Policies & Procedures ⁽⁶⁾	£3,500
B/F from 2008/9 ⁽¹⁾	£37,980	Serious Case Reviews ⁽⁷⁾	£32,598
Total Available	£255,633	Child Death Reviews ⁽⁸⁾	£0
		Business Support	
		Administration ⁽⁹⁾	£4,500
		Staff & Member Dev.	£3,600
		LSCB Projects	
		Advocacy ⁽¹⁰⁾	£36,550
		AIM ⁽¹¹⁾	£9,500
		Runaways ⁽¹²⁾	£5,000
		E-safety ⁽¹³⁾	£1,500
		Total Required	£255,633

Notes

1. The brought forward figure is largely the result of under spend on Serious Case Reviews, the AIM Project, Staff and Member Development and the separate funding of Child Death Reviews.
2. Safeguarding Training Manager (F/T), Business Manager and Administrator (30 hrs per week) - includes mileage.
3. 10 hrs per week to support extra work on allegations against staff (from June 2009)
4. Provides an additional 32 hours of minuting capacity for Child Protection Conferences.
5. Estimated cost based on consultancy fees of £550 per day.
6. Covers Swindon's contribution to the update and maintenance of the South West Child Protection Procedures and their promotion in Swindon.
7. Includes additional funding contributed towards anticipated 2009/10 costs.
8. The Child Death Review Process is funded separately.
9. Includes printing of Annual Report & Business Plan, graphics (logo and covers), hospitality, room hire, software, equipment, major stationary items & furniture.
10. To provide an advocacy service for children and parents within the Child Protection Process as part of a wider Children's Rights service.
11. This amount has been allocated by the LSCB towards the initial implementation of the AIM Project, including employing a co-ordinator for 1 day per week.
12. Towards employing someone 2 days per week for project work and visits.
13. For printed publicity materials.

Overview

In Swindon, we have decided to oversee the implementation of our **Children and Young People Plan** through four **Every Child Matters** outcome groups (*Be Healthy, Stay Safe, Enjoy and Achieve/Economic Wellbeing* and *Positive Contribution*). We have agreed that the LSCB Management Group will be the group overseeing *Stay Safe*.

The Management Group will therefore have responsibility for ensuring that, as well as the LSCB Business Plan, the Children's Trust plan for *Stay Safe* is actioned and that National Indicators relating to it are monitored.

Clearly safeguarding has moved very high up the national agenda in 2008 and in Swindon we have developed an action plan to ensure that we are reviewing our own practice across agencies. We expect to complete the actions in the plan during the year.



Principal Business Plan Objectives

1. **Swindon LSCB Core Business Activities:** to work together to safeguard Swindon's children, delivering a quality service as defined in our *Core and Key Objectives* (see page 6). Priorities in 2009/10 will include further developing our **Child Death Review** processes and reporting and rationalising our processes for monitoring **safer recruitment, allegations against staff, children looked after, disabled children, private fostering and licensing and gambling**.
2. **AIM Project - Sexually Harmful Behaviour:** with the appointment of a project co-ordinator, to embed AIM into mainstream services, developing monitoring and performance management processes and training staff in identification, assessment, management and models of intervention.
3. **Sexual Exploitation & Runaways:** to set up a new working group to monitor progress against their action plan and the new performance indicators, issue guidance and raise awareness around runaways, child sexual exploitation, trafficking, prostitution and grooming.
4. **Safeguarding Children Online:** to set targets for the new E-safety Sub-group action plan, continue to roll-out training for schools, parents and professionals, and to create e-safety policy for Swindon LSCB.
5. **See the Adult, See the Child⁴:** to set up a new working group to take forward the implementation of this work and to oversee this implementation, monitoring progress against defined targets and performance indicators and developing relevant training.
6. **Community Organisations & Safeguarding:** to explore ways to build on existing work (e.g. the launch of the NSPCC *Safer Communities Toolkit*) to extend safeguarding messages more fully into the wider community, including making links with the new NSPCC led *Safeguarding Unit for the Third Sector*.
7. **Service User Consultation:** to further develop the processes by which Swindon LSCB takes into account the views of children and young people in planning and delivering services, involving them wherever possible in events, developing effective feedback from the Children's Rights Service and Swindon Advocacy Movement on views of parents and children involved in CP process, and reviewing Tellus outcomes.
8. **Unintentional Injury:** to examine what is currently known about unintentional injury locally through monitoring hospital admissions (new national performance indicator NI70) and assess how this information may be used to prevent such injuries.
9. **LSCB Governance:** to develop LSCB governance based on our use of the *Challenge & Improvement Tool*, with particular emphasis on developing better management information, performance analysis and risk analysis.

For further information, you may wish to refer to our detailed **Work Plan** derived from these core objectives on the Swindon LSCB website, www.swindonlscb.org.uk in the **About Us – LSCB Documents** section of the site.

⁴ **See the Adult, See the Child (STASTC)** – services for children and families affected by parental mental health issues and/or parental substance misuse and/or parental learning disability.

As part of the government's drive to improve outcomes for children, new legislation (***The Children Act 2004***) was passed in November 2004. This required that every local authority replace their Area Child Protection Committee (ACPC) with a Local Safeguarding Children Board (LSCB) by April 2006.

LSCBs are statutory bodies, placing child protection high on everyone's agenda. All agencies have to comply with the duty placed on them by the 2004 Act to *"safeguard and promote the welfare of children"*.

The core legislation underpinning the work of the LSCB is the ***Children Act 1989*** and the ***Children Act 2004***, which provide a comprehensive framework for the care and protection of children whilst reflecting the principles of the ***Rights of the Child*** and the ***European Convention on Human Rights***.

The services provided by LSCB are shaped by guidance issued by the Department for Education and Skills, the Department of Health and the Home Office, notably ***Working Together to Safeguard Children 2006***.

Swindon LSCB - Wider Structures

Swindon LSCB brings together all the main organisations that work with children and families in Swindon, with the aim of ensuring that they work together effectively to keep children safe. It is a multi-agency body that contributes to and operates within the framework established with partner agencies to produce the Swindon ***Children and Young People's Plan***.

Swindon Borough Council's Children Services takes lead responsibility for the effective function of the LSCB, while all main constituent members are responsible for contributing fully and efficiently to its work.

The LSCB stands alongside the Swindon Children's Trust Board. It has a key role in overseeing the ***Stay Safe*** outcome and both reports to and reviews the work of the Children's Trust Board.

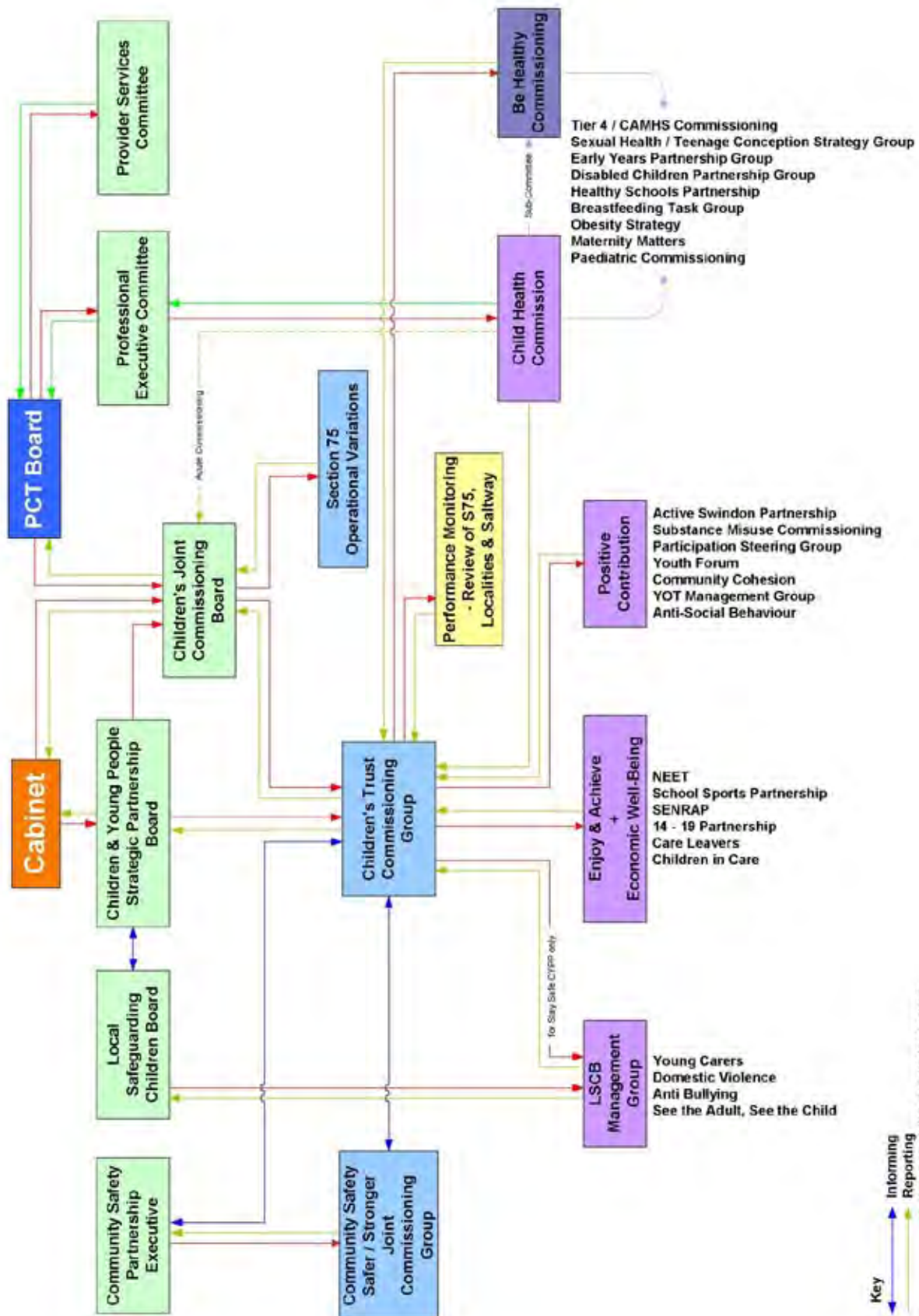
The LSCB meets quarterly and its Management Group meets in the intervening months to take work forward.

To enable it to carry out its work, the LSCB currently has seven main sub-groups: **Serious Case Review, Procedures, Training, Quality Assurance, Media, Safer Recruitment and Allegations Against Staff** and **e-safety**. In response to the requirements of the new child death review process, Swindon and Wiltshire have set up a joint **Child Death Overview Panel**.

In addition, the **Agencies Operational Group** explores specific areas of work on behalf of the LSCB.

Working or project groups are also set up as needed and currently include groups to take work forward on **Sexual Exploitation and Runaways, AIM (Children and Young People Who Exhibit Sexually Harmful Behaviour)** and **See the Adult See the Child**.

You will find details of the membership, terms of reference and meeting schedules for these groups on the Swindon LSCB Website, www.swindonlscb.org.uk in the ***About Us*** section.



National Documents

Children Act 1989, HMSO, London, 1989

www.hmso.gov.uk/acts/acts1989/Ukpga_19890041_en_1.htm and

Children Act 2004 HMSO, London, 2004 www.hmso.gov.uk/acts/acts2004/20040031.htm

Children's Services Statistical Neighbour Benchmarking Tool

www.dcsf.gov.uk/rsgateway/DB/STA/t000712/index.shtml

European Convention of Human Rights, Rome, 1950

www.hrcr.org/docs/Eur_Convention/euroconv.html

Every Child Matters: Change for Children, HM Government, 2004

<http://publications.everychildmatters.gov.uk/default.aspx?PageFunction=productdetails&PageMode=publications&ProductId=DfES%2F1081%2F2004&> & **Every Child Matters: next steps**, DfES, 2004

<http://publications.everychildmatters.gov.uk/default.aspx?PageFunction=productdetails&PageMode=publications&ProductId=DfES+0240+2004&>

The Protection of Children in England: A Progress Report, The Lord Laming, March 2009

<http://publications.everychildmatters.gov.uk/default.aspx?PageFunction=productdetails&PageMode=publications&ProductId=HC+330>

Referrals, Assessments, and Children and Young People Who Are the Subject of A Child

Protection Plan, England - Year ending 31 March 2008 (DCSF)

www.dcsf.gov.uk/rsgateway/DB/SFR/s000811/index.shtml

Rights of the Child, United Nations, 1989 www.unicef.org/crc/crc.htm

Statutory guidance on making arrangements to safeguard and promote the welfare of

children under section 11 of the Children Act 2004, Department for Education and Skills, 2005 -

Updated March 2007

<http://publications.everychildmatters.gov.uk/default.aspx?PageFunction=productdetails&PageMode=publications&ProductId=DFES-0036-2007>

What to Do If You're Worried a Child Is Being Abused [www.everychildmatters.gov.uk/resources-](http://www.everychildmatters.gov.uk/resources-and-practice/IG00182/)

[and-practice/IG00182/](http://www.everychildmatters.gov.uk/resources-and-practice/IG00182/)

Why Children Die: A Pilot Study 2006, CEMACH, May 2008

[http://www.cemach.org.uk/getdoc/cc3d51cc-5043-4132-99b7-af5219276dce/Child-Death-](http://www.cemach.org.uk/getdoc/cc3d51cc-5043-4132-99b7-af5219276dce/Child-Death-Review.aspx)

[Review.aspx](http://www.cemach.org.uk/getdoc/cc3d51cc-5043-4132-99b7-af5219276dce/Child-Death-Review.aspx)

Working Together to Safeguard Children: a guide to interagency working to safeguard and

promote the welfare of children, HM Government, 2006 [www.everychildmatters.gov.uk/resources-](http://www.everychildmatters.gov.uk/resources-and-practice/IG00060/)

[and-practice/IG00060/](http://www.everychildmatters.gov.uk/resources-and-practice/IG00060/)

Local Documents

See the Adult, See the Chil

www.swindonlscb.org.uk/lscb-index/lscb-workers-home/lscb-workers-guidance.htm

South West Child Protection Procedures www.swcpp.org.uk

Swindon Children and Young People's Plan

http://www.swindon.gov.uk/cypsp/children_youngpeoples_plan

Swindon LSCB Media Strategy [www.swindonlscb.org.uk/lscb-index/lscb-general-about/lscb-](http://www.swindonlscb.org.uk/lscb-index/lscb-general-about/lscb-aboutus-subgroups/lscb-general-aboutus-commssub.htm)

[aboutus-subgroups/lscb-general-aboutus-commssub.htm](http://www.swindonlscb.org.uk/lscb-index/lscb-general-about/lscb-aboutus-subgroups/lscb-general-aboutus-commssub.htm)

Swindon LSCB Training Programme: April 2009 to March 2010

www.swindonlscb.org.uk/lscb-index/lscb-workers-home/lscb-workers-training.htm

Swindon Serious Case Review Process Guide

www.swindonlscb.org.uk/lscb-index/lscb-general-about/lscb-aboutus-scr.htm

Tellus3 – Swindon

www.ofsted.gov.uk/Ofsted-home/Children-s-and-local-services-by-local-authority/Swindon

Work Plan: April 2009 to March 2010, Swindon LSCB

www.swindonlscb.org.uk/lscb-index/lscb-general-about/lscb-aboutus-documents.htm

Swindon LSCB

Room 1.6, Civic Annexe
Civic Offices
Euclid Street
Swindon SN1 2JH


LSCB E-mail: LSCB@swindon.gov.uk

LSCB Telephone Number: 01793 463803

Further information is also available at:

Swindon LSCB Website: www.swindonlscb.org.uk





The information
about this booklet is available on
the internet at www.swindon.gov.uk.
It can be produced in a range of languages
and formats (such as large print, Braille or
other accessible formats) by contacting the
Customer Services Department.

Tel: 01793 445500

Fax: 01793 463331

E-mail: customerservices@swindon.gov.uk